

Name _____

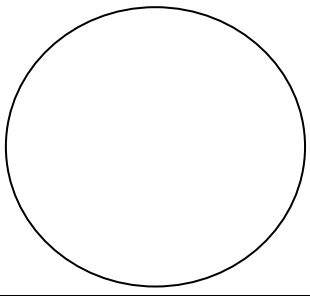
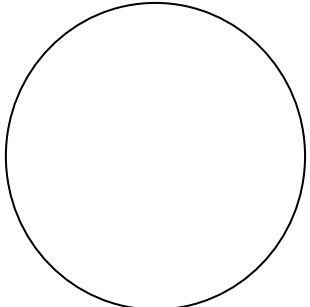
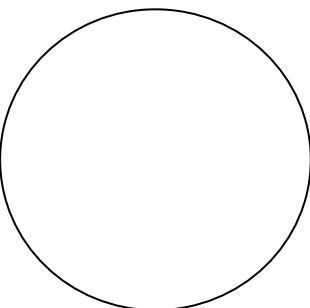
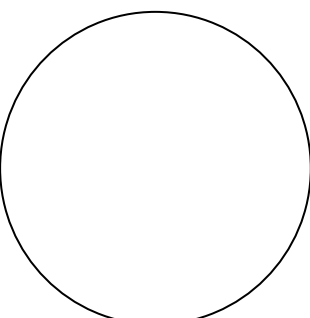
Per _____ Date _____

Plant and Animal Cells

Big Idea: The organs in an organism are made of cells that have structures and perform specific life functions.

Examine the 4 mystery slides to determine if they are plant or animal cells. Draw what you see in the space provided.

Prediction: How will plant cells be different from animal cells? _____

Mystery Slide	Drawing	Observations and Supporting Evidence	Plant or Animal Cell
A			
B			
C			
D			

Analysis:

1. Explain how you decided which slides were plant cells and which slides were animal cells.
2. Describe the function of a chloroplast. In what type of cell are they found?
3. In what type of cell were structures easier to see? What made them easier to see?

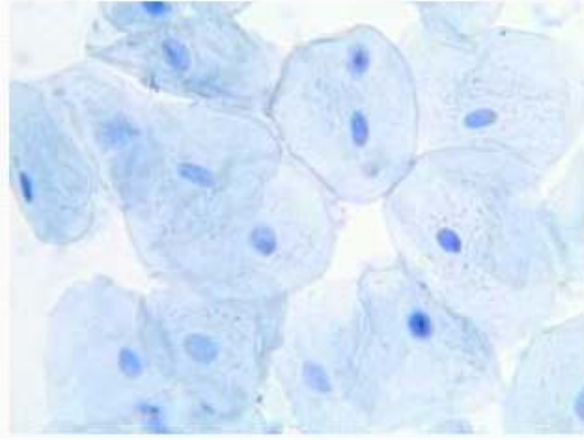
Conclusion:

4. Your veterinarian tells you that dog food that has more animal material than plant material is better for your dog. How can you find out if the dog food you currently feed your dog is good for him? How will you know?
5. Why are some organelles found only in plant cells?
6. There are many different kinds of animal cells (brain cells, muscle cells, blood cells, etc.) Do you think that each type of animal cell has all of the organelles we talked about in class? Why or why not?

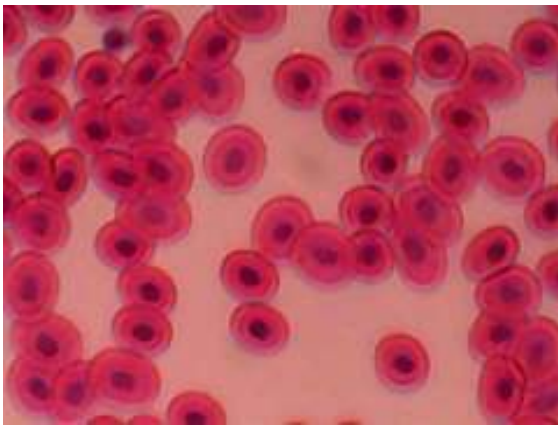
Slide 'A'



Slide 'B'



Slide 'C'



Slide 'D'

